

# ACPL

## Volume control panel with local input for SDQ5PIR



ACPL is a wired remote control with local input for the Apart SDQ5PIR active speaker. This audio control panel makes you forget the worries associated with the use of audio in public rooms used by different people on an almost hourly basis. No more stolen or lost remote controls, no more battery problems and no worries because of sunlight that bothers the IR receiver.

The ACPL has a brushed aluminum front that fits into any interior style. The remote control panel can power the SDQ5PIR ON or OFF, has volume control or direct muting. A power indicating LED indicates the power status of the active speakers.

Connection to the active speaker is done by a CAT5 cable which also takes care of power.

There is a selectable MIC-input (jack) for microphones and a stereo line input (mini-jack) for laptops or personal audio devices. Especially for those laptops and MP3-players ACPL has increased input sensitivity. For better speech intelligibility and to avoid “plopping” noises, there is a low-cut filter on the MIC-input.

For easy mounting two in-wall boxes are available: E-MODIN for dry walls and N-MODIN for brick walls.

### TECHNICAL SPECIFICATIONS

display	No	display backlight	No
supported main unit	SDQ5PIR	programmable functions	No
addressing	Hardwired	connector type	RJ45
max. cable length in m	100	power type	Phantom
Inputs	Bal. Mic & Unbal. Line	width in mm	85
height in mm	85	depth in mm	28
weight in gr	90		

MORE PICTURES

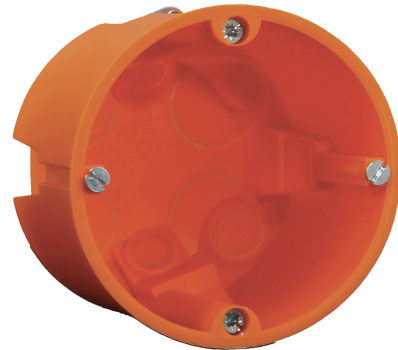


ACCESSORIES



**N-MODIN**

Helia built-in box for wall controls



**E-MODIN**

Build-in box for Euro controls